



FAMILY SERVICE FACT SHEET

SOCIAL DETERMINANTS OF HEALTH

Family Service and community partners are working to address the social determinants of health (SDOH) that affect individuals and families served through a trauma-informed care lens. SDOH are conditions in environments where people are **born, live, learn, work, play**, and **age** that affect a wide range of health and quality of life outcomes.

ABOUT US

Serving almost 60,000 people annually

LEGAL STATUS

A 501(c)(3) public charity established in 1903.

MISSION STATEMENT

Empowering individuals and families to transform their lives and strengthen our community.

CORE VALUES

- Accountability
- Excellence
- Integrity
- Respect
- Responsiveness

BOARD OF DIRECTORS AND STAFF

- The board includes 18 to 36 individuals with expertise in the volunteer, nonprofit, and for profit sectors.
- President/CEO, Mary E. Garr, and more than 480 employees, over 5,000 volunteers* with an annual budget of over \$37 million.**

**2025 budget

SERVICES

WHERE SERVICES ARE DELIVERED

- Four Family Service office locations and multiple community based office locations
- Elementary, Middle and High School campuses
- Community, school, or home settings
- Four rural county office locations

COST OF SERVICES

A combination of sliding scale fees and/or free services based on program eligibility.

WHO WE SERVE

CLIENTS

Prenatal care, infants, children, youth, seniors, and families of all ethnic, racial and cultural backgrounds, and socio-economic levels.

FUNDING

KEY FUNDING SOURCES

- United Way of San Antonio and Bexar County
- Government contracts, public organizations
- Foundation and corporate grants
- Private contributions
- Client fees
- Third-party insurance payments

PROGRAM SERVICES BY SOCIAL DETERMINANTS OF HEALTH IMPACT AREAS

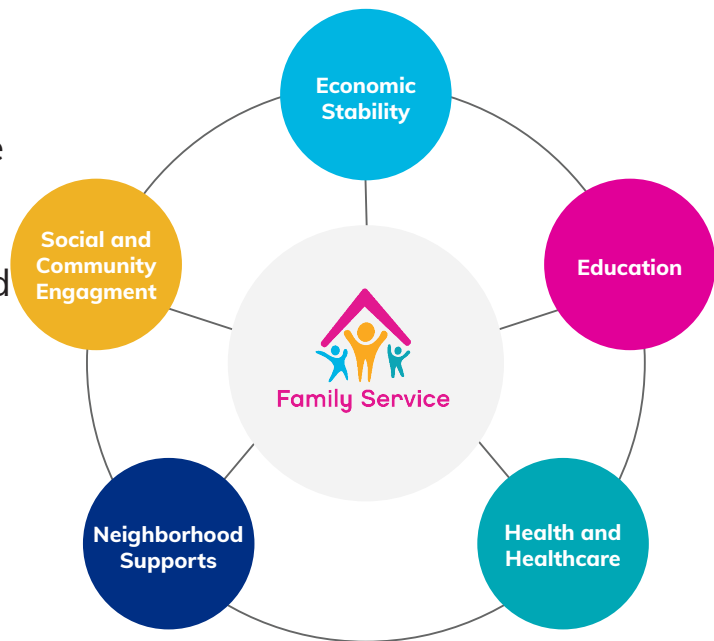
Though our services are outlined under one SDOH, our services impact more than one impact area.

ECONOMIC STABILITY	EDUCATION	HEALTH & HEALTH CARE	NEIGHBORHOOD SUPPORTS	SOCIAL & COMMUNITY ENGAGEMENT
<ul style="list-style-type: none"> • One-on-One Financial Counseling (Financial Empowerment Center) • Tax Assistance (VITA/My Free Taxes) • Workforce Development • Early Childhood Educator Training including Substitute and Child Development Associate (CDA) Training • Trades Skill Job Training 	<ul style="list-style-type: none"> • Early Childhood Education • Early Head Start & Head Start • Texas School Ready • Youth Education & STEAM-focused afterschool program • Teen Tech Center • Youth Summer Internships 	<ul style="list-style-type: none"> • Behavioral Health Counseling • Early Childhood Well-Being • School-Based Programs • Outpatient Substance Abuse Treatment 	<ul style="list-style-type: none"> • Emergency Pantry (Margaret's Place I & II) • Family Service Neighborhood Place and Partner Services 	<ul style="list-style-type: none"> • Community Healthcare Workers (Promotoras) • Family Strengthening • Helping Children Cope with Divorce Seminar • Holiday Support (Adopt-A-Family) • Internships • Older Adults Services • Parent Engagement • Parent Education • Respite Care • Supervised Visitations (KidShare) • Volunteers
<ul style="list-style-type: none"> • Rural Services 				

WHAT ARE SOCIAL DETERMINANTS OF HEALTH?

Family Service Programs are categorized into a Social Determinants of Health framework. We realize that the people we serve have one or often more challenges in their lives, and we strive to address them through a comprehensive approach looking at Economic Stability, Educational Needs and Opportunities, Health and Healthcare, Neighborhood and Home Supports, and Social and Community Engagement.

A happy, healthy and stable life is built through these core foundations; if one piece is missing, it can destabilize the entire structure. By strengthening all areas of our clients' lives, we are truly moving them forward, not just for today, but **for the future**.



Breakdown from Healthy People 2030

ECONOMIC STABILITY

What Does It Address:

- Employment
- Food Insecurity
- Housing Instability
- Poverty

Family Service Programs:

Emergency Supports, Financial Empowerment Center, Internships, VITA Free Tax Preparation, Workforce Development including GED and ESL Classes and Early Education Training, Trade Skills Training, Etc.

EDUCATION

What Does It Address:

- Early Childhood Education and Development
- Enrollment in Higher Education
- High School Graduation
- Language and Literacy

Family Service Programs:

Best Buy Teen Tech Center, Early Head Start & Head Start, Early Childhood Well-Being, Digital Literacy, Internships, Mentorships, Parent Engagement, Texas School Ready, Workforce Development, Youth Education

HEALTH AND HEALTHCARE

What Does It Address:

- Access to Mental Health
- Access to Healthcare
- Access to Primary Care
- Health Literacy

Family Service Programs:

Behavioral Health Counseling (individual, group & EAP), Early Childhood Well-Being, Older Adults Services, Promotoras (Community Health Workers), Respite Care, (Supervised Visitations (KidShare), Positive Parenting Program)

NEIGHBORHOOD SUPPORTS

What Does It Address:

- Safe Homes and Neighborhoods
- Crime and Violence
- Environmental Conditions
- Quality of Housing
- Transportation and Physical Activity

Family Service Programs:

Emergency Supports, Neighborhood Places & Partner Services, Volunteer Programs

SOCIAL AND COMMUNITY ENGAGEMENT

What Does It Address:

- Health Discussions and Healthy Eating
- Family Communication and Support Systems
- Civic Participation
- Discrimination
- Social Cohesion

Family Service Programs:

Best Buy Teen Tech Center, Family Strengthening, Holiday Assistance (Adopt-A-Family), Internships, Mentorships, Neighborhood Places, Older Adults Services, Promotoras (Community Health Workers), Respite Care, Supervised Visitations (KidShare), Volunteer Programs, Youth Education